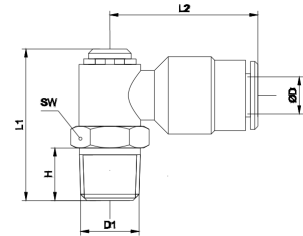
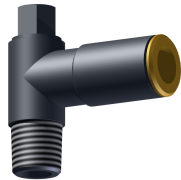


**Hochdruckverschraubung, Winkeleinschraubverschraubung 360°  
 drehbar konisch**  
*high pressure, complete single banjo (rotating under pressure)  
 360° con.*



<b>Betriebstemperatur</b>	-20°C bis +70°C	<b>operating temperature</b>	-20°C up to +70°C
<b>Betriebsdruck</b>	max. 150bar	<b>operating pressure</b>	max. 150bar
<b>Werkstoff</b>	Gehäuse Messing (Ms58) vernickelt Dichtung aus NBR Druckring aus Messing (Ms58) blank	<b>material</b>	body brass (Ms58) nickel-plated silicon-free NBR brass thrust ring (Ms58) polished

ØD [mm]	D1	H [mm]	L1 [mm]	L2 [mm]	SW [mm]
4,0	R1/8	7,5	24,5	22,0	6,0
4,0	M6x0,75	6,0	24,0	22,0	6,0
4,0	M6x1	8,0	24,0	22,0	6,0
4,0	M8x1	8,0	24,0	22,0	6,0
4,0	M10x1	8,0	25,0	22,0	6,0
6,0	R1/8	7,05	24,5	24,0	6,0
6,0	M6x0,75	6,0	28,0	24,0	6,0
6,0	M6x1	8,0	24,0	24,0	6,0
6,0	M8x1	8,0	24,0	24,0	6,0
6,0	M10x1	8,0	25,0	24,0	6,0

**weitere Optionen und Zubehör auf Anfrage**  
*more options and accessories on request*