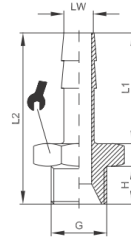
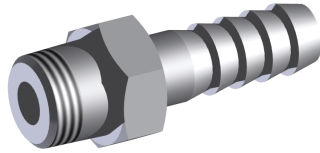



Schlauchtülle zyl. male hose adapter cyl.



Betriebstemperatur	max. +150°C	operating temperature	max. +150°C
Betriebsdruck	max. 60bar	operating pressure	max. 60bar
Werkstoff	Messing (Ms58) vernickelt bzw. blank	material	brass (Ms58) nickel-plated or polished

LW [mm]	G	H [mm]	L1 [mm]	L2 [mm]	 [mm]
7,0	G1/8	6,0	19,0	29,5	14,0
7,0	G1/4	8,0	19,0	32,0	14,0
8,0	G1/8	6,0	19,0	29,5	12,0
12,0	G3/8	9,0	20,0	34,0	19,0
12,0	G1/2	10,0	20,0	35,5	22,0
9,0	G1/4	8,0	19,0	33,0	14,0
9,0	G1/8	6,0	19,0	29,5	12,0
9,0	G3/8	9,0	19,0	33,0	19,0
12,0	G1/4	8,0	20,0	33,0	14,0

weitere Optionen und Zubehör auf Anfrage
more options and accessories on request