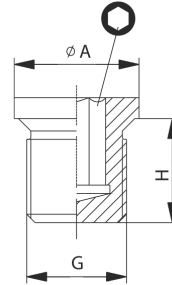
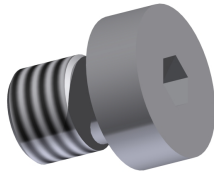


Verschlusschraube Innensechskant mit Bund parallel male plug



| | | | |
|---------------------------|-------------------------------------|------------------------------|---|
| Betriebstemperatur | max. +150°C | operating temperature | max. +150°C |
| Betriebsdruck | max. 60bar | operating pressure | max. 60bar |
| Werkstoff | Messing (Ms58) vernickelt und blank | material | brass (Ms58) nickel-plated and polished |

| G | $\varnothing A$ [mm] | H [mm] | \varnothing [mm] |
|------|-------------------------|-----------|-----------------------|
| G1/8 | 14,0 | 8,0 | 5,0 |
| G1/4 | 18,0 | 12,0 | 6,0 |
| G3/8 | 22,0 | 12,0 | 8,0 |
| G1/2 | 26,0 | 14,0 | 10,0 |
| G3/4 | 32,0 | 16,0 | 12,0 |

weitere Optionen und Zubehör auf Anfrage
more options and accessories on request