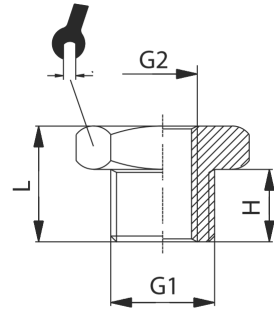
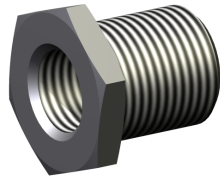



## Reduzierung reducer




<b>Betriebstemperatur</b>	max. +150°C	<b>operating temperature</b>	max. +150°C
<b>Betriebsdruck</b>	max. 60bar	<b>operating pressure</b>	max. 60bar
<b>Werkstoff</b>	Messing (Ms58) vernickelt und blank Edelstahl	<b>material</b>	brass (Ms58) nickel-plated and polished stainless steel

Messing / brass

G1	G2	H [mm]	L [mm]	 [mm]
G1/8	M5	7,0	11,0	13,0
G1/4	G1/8	9,0	13,0	17,0
G3/8	G1/4	10,0	15,0	19,0
G3/8	G1/8	9,0	14,0	19,0
G1/2	G1/4	10,0	15,5	24,0
G1/2	G1/8	10,0	15,5	24,0
G1/2	G3/8	10,0	15,5	24,0
G3/4	G1/2	12,0	19,0	32,0
G3/4	G3/8	12,0	19,0	32,0
G3/4	G1/4	12,0	19,5	32,0
G1	G3/4	15,0	23,0	41,0
G1	G1/2	15,0	23,0	41,0
G1	G3/8	15,0	23,0	41,0
G1 1/4	G1	15,0	22,0	42,0
G1 1/4	G3/4	15,5	22,0	42,0
G1 1/4	G1/2	15,5	22,0	42,0
G1 1/2	G1 1/4	15,0	23,0	50,0
G1 1/2	G1	17,0	25,0	50,0
G1 1/2	G3/4	15,5	22,0	50,0
G2	G1 1/2	18,0	26,5	60,0
G2	G1 1/4	15,0	24,5	60,0
G2	G1	18,0	26,0	60,0
G2 1/2	G2	22,0	30,0	78,0

Edelstahl / stainless steel

G1	G2	H [mm]	L [mm]	 [mm]
M5	G1/8	6,0	10,5	14,0
G1/8	G1/4	8,0	13,0	17,0
G1/4	G3/8	9,0	14,0	19,0

**weitere Optionen und Zubehör auf Anfrage**  
more options and accessories on request