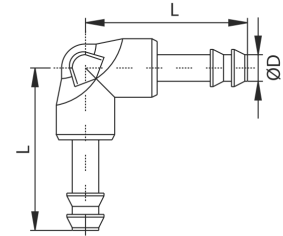
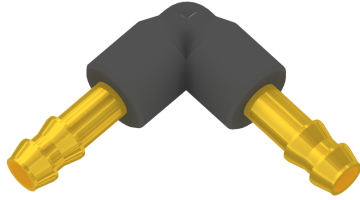


Stecknippel-Winkelverbinder push-in elbow connector



Betriebstemperatur	max. +80°C	operating temperature	max. +80°C
Betriebsdruck	max. 20bar	operating pressure	max. 20bar
Werkstoff	Messing (Ms58) vernickelt PVC	material	body brass (Ms58) nickel-plated PVC

ØD [mm]	L [mm]
2,0	16,0
3,0	16,0
4,0	22,0
6,0	22,0

weitere Optionen und Zubehör auf Anfrage
more options and accessories on request